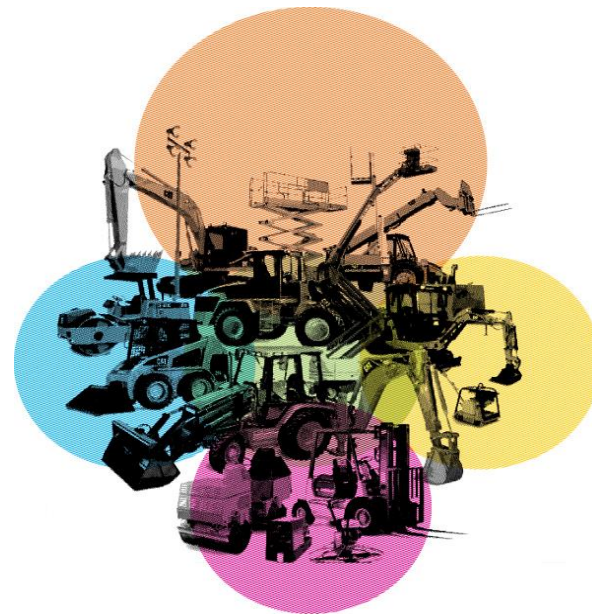


AI @ Renta

Production applications of AI in fleet operations

Joel Särkkä

CIO Renta Group

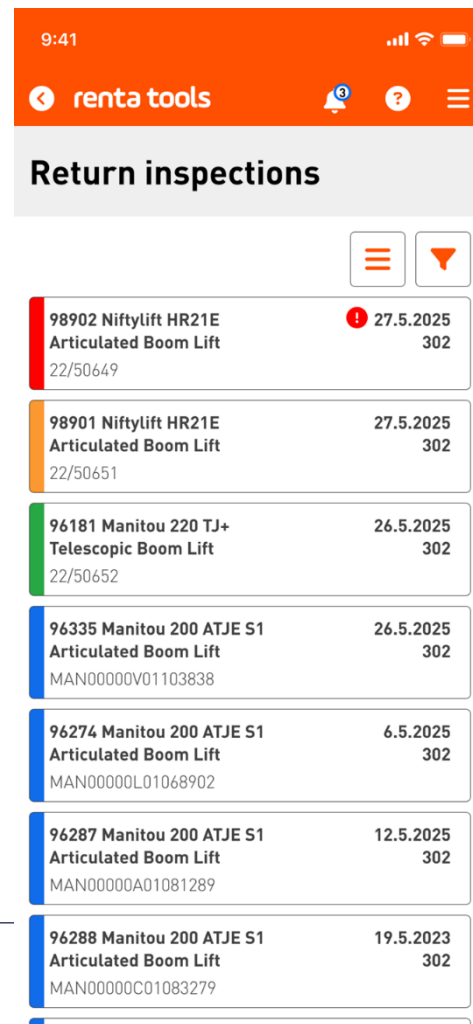


Join the conversation on LinkedIn: [#ERAConvention2025](#)

Prioritizing Return Inspections

Renta Tools

- Renta's internal fleet management solution Renta Tools prioritizes depot-level return inspections based on utilization and other relevant datapoints



The screenshot shows the 'renta tools' mobile application interface. At the top, there's an orange header with the time '9:41', signal strength, and battery level. Below the header, the title 'Return inspections' is displayed. A filter icon (funnel) is visible on the right. The main content is a list of inspection items, each with a colored status bar on the left (red, orange, green, blue) and a date on the right. The items are as follows:

Item ID	Equipment Type	Due Date	Location
98902 Niftylift HR21E 22/50649	Articulated Boom Lift	27.5.2025 302	
98901 Niftylift HR21E 22/50651	Articulated Boom Lift	27.5.2025 302	
96181 Manitou 220 TJ+ 22/50652	Telescopic Boom Lift	26.5.2025 302	
96335 Manitou 200 ATJE S1 MAN00000V01103838	Articulated Boom Lift	26.5.2025 302	
96274 Manitou 200 ATJE S1 MAN00000L01068902	Articulated Boom Lift	6.5.2025 302	
96287 Manitou 200 ATJE S1 MAN00000A01081289	Articulated Boom Lift	12.5.2025 302	
96288 Manitou 200 ATJE S1 MAN00000C01083279	Articulated Boom Lift	19.5.2023 302	

Forecasting upcoming services

Renta Tools

- Renta's internal fleet management solution Renta Tools forecasts upcoming service events based on historical usage & other relevant datapoints

The screenshot shows the Renta Tools mobile app interface. At the top, there's an orange header with the time 9:41, signal strength, and battery level. Below the header, the app name 'renta tools' is displayed. A navigation bar at the bottom includes 'Menu', 'Gallery', 'Info' (which is highlighted with an orange underline), 'Location', and 'Data'. The main content area displays the device ID '96343 Manitou 280 TJ ST5'. Below this, there are three sections: 'Core information', 'Maintenance dates', and 'Usage statistics', each containing a table of data.

Core information	
Rental status	In stock (204)
Rental prohibited	No
Pending actions	No
Pending since	-
Next annual inspection	18.08.2025
Device created at	29.08.2023

Maintenance dates	
Previous return inspection	20.04.2025
Previous service	5.8.2024
Next predicted service	15.7.2025
Predicted service factor	Operating hours
Previous repair	3.3.2025

Usage statistics	
Total operating hours	832
Operating hours since service	301
Total rental days	183
Rental days since service	88